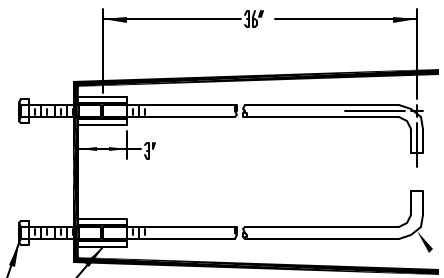
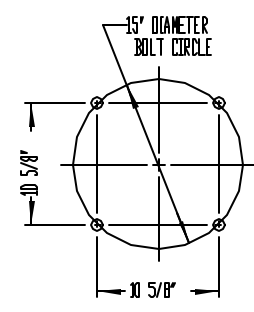
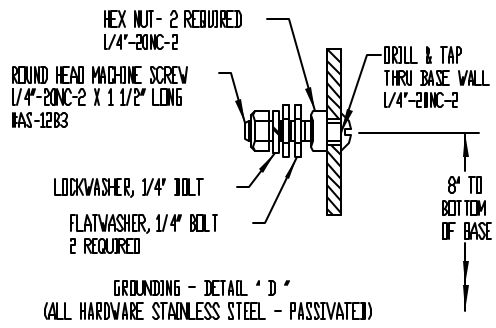
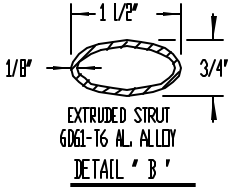


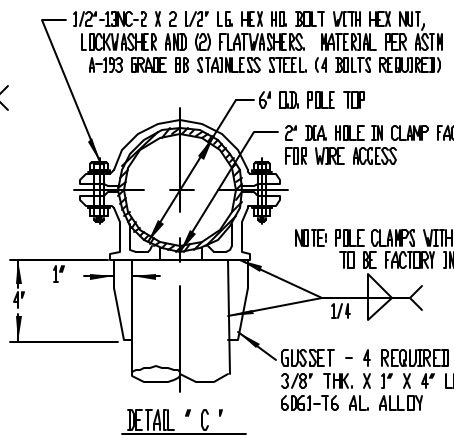
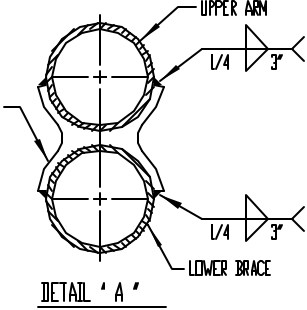
25' - 9" LUMINAIRE MOUNTING HEIGHT



1" - 8NC-2 X 3" LG. HEX HD. BOLT, LOCKWASHER AND FLATWASHER - STAINLESS STEEL 4 OF EACH REQ'D.

1" DIA X 40" LONG ANCHOR ROD (4 REQ'D). ANCHOR ROD PER ASTM A576 STEEL WITH 55,000 PSI YIELD STRENGTH. TOP 12" OF ROD TO BE GALVANIZED PER ASTM A153.

CONNECTOR EXTRUSION X 3" LONG 6061-T6 AL. ALLOY #A-24677-1



NOTE: POLE CLAMPS WITH HARDWARE TO BE FACTORY INSTALLED.

356-T6 CAST AL. ALLOY SHAFT BASE TYPE 'S0-2'
 360 DAST AL. ALLOY BOLT COVERS - 4 REQUIRED FASTENED WITH (4) 1/4" - 20NC-2 SELF-TAPPING STAINLESS STEEL SCREWS
 CONNECTING HARDWARE - 4 SETS REQUIRED
 1" - 8NC-2 X 3 1/2" LONG HEX HEAD BOLTS WITH HEX NUTS, LOCKWASHERS AND (2) FLATWASHERS ALL STAINLESS STEEL - PASSIVATED
 356-T6 CAST AL. ALLOY TRANSFORMER BASE TYPE TB1-37 WITH GROUND BOLT PER DETAIL 'D'
 1/4" THK. PLASTIC TRANSFORMER BASE COVER
 BOTTOM OF BASE TO BE COATED WITH BITUMINOUS PAINT

HARDWARE NOTE:

- THIS SHAFT ASSEMBLY IS SUPPLIED WITH THE FOLLOWING HARDWARE:
- (4) 1" - 8NC-2 X 3 1/2" LONG HEX HEAD BOLTS - ASTM A193 GRADE B8 STAINLESS STEEL
 - (4) 1" - 8NC-2 HEX NUTS - ASTM A194 STAINLESS STEEL
 - (4) LOCKWASHERS FOR 1" DIA. BOLT - ASTM A194 STAINLESS STEEL
 - (4) FLATWASHERS (2" O.D.) FOR 1" DIA. BOLT - ASTM A194 STAINLESS STEEL
 - (4) FLATWASHERS (2 1/2" O.D.) FOR 1" DIA. BOLT - ASTM A194 STAINLESS STEEL

GENERAL NOTES:

- 1. - USE 4043 WELD WIRE.
- 2. - 6063 ASSEMBLY 3/75 WALL OR LESS TO BE HEAT-TREATED TO T6 TEMPER AFTER WELDING.
- 3. - SHAFT TO BE MECHANICALLY EXPANDED INSIDE SHOE BASE FOR SNUG FIT BEFORE WELDING.

AL	EXP	RE	BY	CD	DATE	NJDOT LIGHTING TYPE 'L - 8'	
A	REDRAWN - NO CHANGES	M-34-98	VVV				
NEW JERSEY DEPT. OF TRANSPORTATION						A.J.P. 11-30-77 NONE	C-69129 REV. A